



Feature

- Cavitless corrugated flat film
- A variety of housings are available
- Protection level IP68
- Multiple electrical connection options
- Sanitary surface roughness $Ra < 0.38 \mu m$ can be selected

Application

- Food and beverage industry
- Medical pharmaceutical industry
- Biotechnology
- Pigment, spraying
- Chemical industry and paper industry

Description

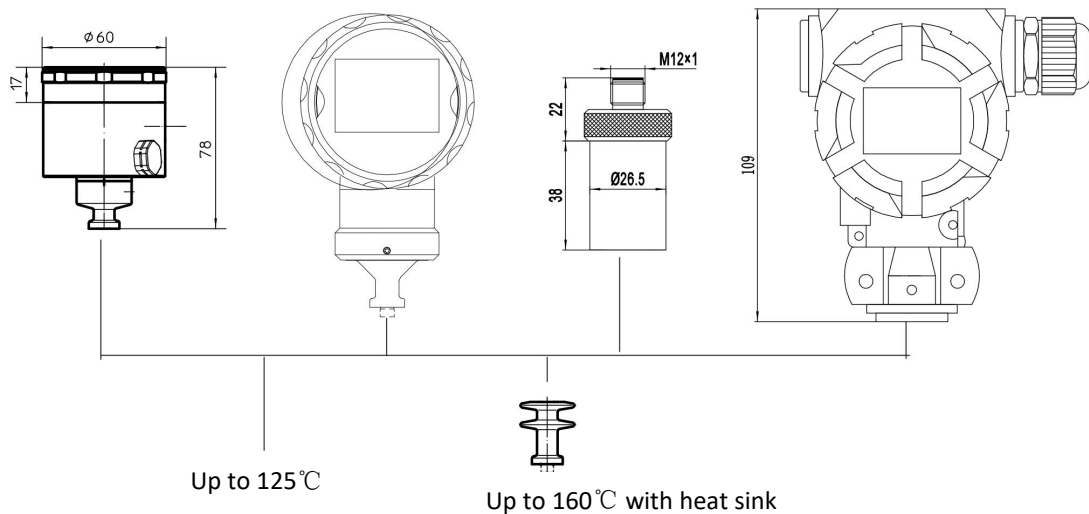
This series of products is a sanitary special pressure transmitter with diffused silicon pressure core as sensitive element and 316L stainless steel diaphragm isolation. This series of products has the characteristics of stainless steel welded structure, high precision, non-cavity corrugated flat film, wide measuring range and field display. Widely used in food, medicine and other health industries or fluid pressure measurement and control with particles.



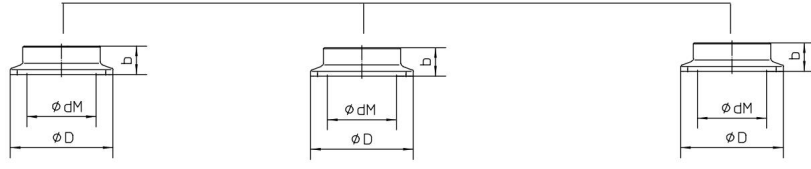
Speciafication

Product Type	Preposition type	Flat film type/sanitary type
Pressure range	-0.1 ~ 0 bar to 0 ~ 400 bar	-0.1 ~ 0 bar to 0 ~ 40 bar C:C
Type of pressure	Gauge pressure and absolute pressure	
Measurement accuracy	0.5% FS; 0.25% FS	
Output signal	4~20 mA (Two wire)	
Power supply	12~30Vdc	
Load resistance	<(U-12)/0.02	
Electrical connection	M12 connector, Hirschman connector, Waterproof joint with wire lead	
Ambient temperature	(-40~80) °C	
Working temperature	Direct connection type: (-20~125) °C、Heat sink type: (-20~160) °C、	
Protection grades	IP67	

Dimension



Wetted Part



ISO 2852

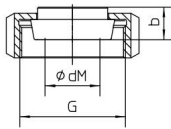
DN	ZOII	PN	dM	ΦD	b	代码
25	1"	16	22.6	50.5	14	C1
38	1 1/2"	16	34	50.5	12	C2
51	2"	16	46	64	14	C3

DIN 32676

DN	PN	dM	ΦD	b	代码
25	16	22.6	50.5	14	C4
32	16	30	50.5	14	C5
40	16	34	50.5	12	C6
50	16	46	64	14	C7

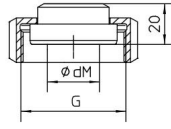
Tri-clamp connection

DN	PN	dM	ΦD	b	代码
3/4"	16	15	25	15	C8
1"	16	22.6	50.5	15	C9
1 1/2"	16	34	50.5	12	C10
2"	16	46	64	14	C11



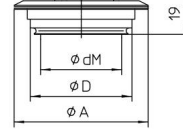
DIN 11851

DN25	PN	dM	b	G	代码
25	40	27	16	Rd. 52*1/6	C12
32	40	36	16	Rd. 58*1/6	C13
40	40	40	16	Rd. 65*1/6	C14
50	25	51	17	Rd. 78*1/6	C15



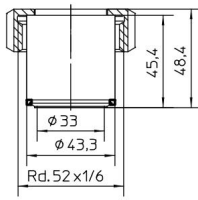
DIN 11864-1

DN25	PN	dM	G	代码
25	40	24	Rd. 52*1/6	C16
32	40	30	Rd. 58*1/6	C17
40	40	34	Rd. 65*1/6	C18
50	25	48	Rd. 78*1/6	C19



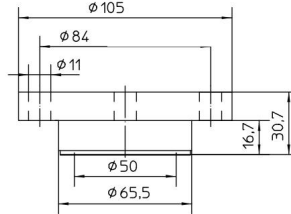
DN	ΦdM	ΦA	ΦD	代码
25 1"	44	66	50	C20
40-125	58	84	68	C21

C22

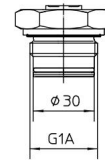


卫生型 Φ43.3探头
DN25/PN40

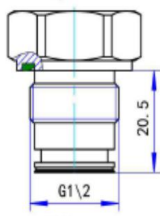
C23



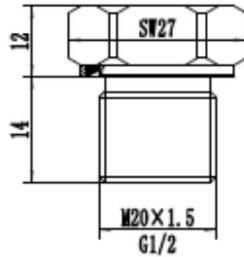
DN50 PN40



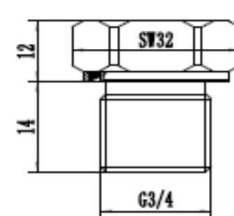
扩散硅隔离型



膜片 Φ18
扩散硅隔离型



扩散硅前置型




扩散硅前置型

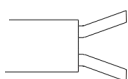


E-Connection

Hirschmann	PIN	2 wire 4-20mA		3 wire Votage	
		Function	Color	Function	Wire Color
	1	Power+	Red	Power+	Red
	2	Signal+	Black	Power-/Signal-	Black
	3			Signal+	Green

M12*1 4pin Connector	PIN	2wire 4-20mA		3 wire Votage	
		Function	Wire Col	Function	Wire Colo
	1	Power+	Brown	Power+	Brown
	3	Signal+	Blue	Signal+	Blue
	4			Power-/Signal-	Black

Water-proof Connector	2 wire 4-20mA		3 wire Votage	
	Function	Wire Color	Function	Wire Color
	Power+	Red	Power+	Red
	Signal+	Black	Power-/Signal-	Black
			Signal+	Green

Plug-in level	2 wire 4-20mA		3 wire Votage	
	Function	Color	Function	Color
	Power+	Red	Power+	Red
	Signal+	Black	Power-/Signal-	Black
			Signal+	Blue



Order Code

Series code	PT216	- X	- X	- X	X	- X	- X	- X	- X	- X	- X	- X	- X	- X
product mix	Flat film φ 27 shell	AS	↑	↑	↑	↑	↑	↑	↑	↑	↑	↑	↑	↑
	Flat film type -2088 shell	AH												
	Flat film-axial all-stainless steel shell	AM												
	Flat film type-radial all stainless steel shell	AN												
	Sanitary φ 27 shell	WS												
	Sanitary type -2088 shell	WH												
	Sanitary-axial all-stainless steel shell	WM												
	Sanitary type-radial all stainless steel shell	WN												
	Core preposed φ 27 shell	QS												
	Core front type -2088 shell	QH												
Type of pressure	manometer pressure	G												
	Absolute pressure	A												
Type of pressure	bar	B												
	MPa	M												
	kPa	K												
pressure range	Pressure range value x	X												
procedure linkage	G1/2	G1/2												
	G1	G1												
	G3/4	G3/4												
	M20×1.5	M20												
	See the specific code of pressure interface for other details	X												
output signal	4 ~ 20mA	MA												
	0 ~ 10VDC(only product structures AS, WS, QS are optional)	10V												
	0 ~ 5VDC(only product structures AS, WS, QS are optional)	5V												
electrical connection	Great hessman connection (product structure AS, WS, QS products can be selected)	1D												
	M12×1 four-pin circular connector	T												
	Waterproof joint lead x metre	MX												
Material requirements	SUS304Stainless steel (standard shell material)	emp												
	SUS316L	3L												
accuracy class	Grade 0.5 (standard precision grade)	emp												
	Grade0.25	2A												
Connecting structure	Standard conventional direct connection type, temperature resistance range:-20 ~ 125°C	empt												
	High-temperature heat dissipation groove type and temperature resistance range:-20 ~ 160°C (product structure	HT												
special requirements	Please consult for other special requirements													...



